

FOR SALE

# KASIF



BUILDER	BILGIN YACHTS
BUILT / REFIT	2023
BEAM	8.40M / 27'06"
DRAFT	2.50M / 8'02"
STATEROOMS	5
GUESTS	10
CREW	6
HULL MATERIAL	STEEL
SPEED	10 KNOTS / 14 MAX
FLAG	CAYMAN ISLANDS

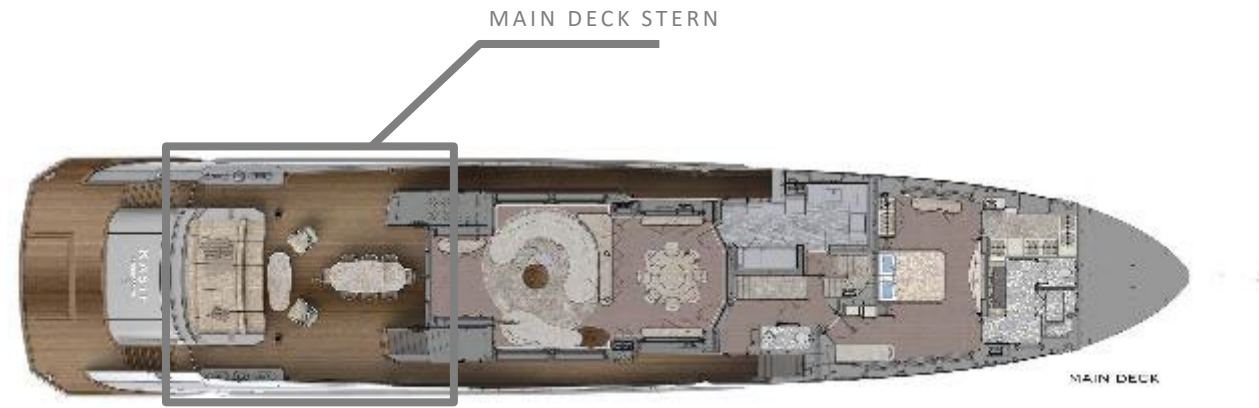
*EXPERT'S VIEW*

*"KASIF represents a highly capable transoceanic full displacement steel hull yacht, designed for comfort at sea with lavish appointments. Designed by two award winning designers with exterior by Unique Yacht Design and interior by HOT LAB. Large volume of 381 GT and 8' draft assure she is capable of cruising anywhere on the globe. Fitted with at rest stabilizer by ABT Trac and reliable CAT power. Rare to find like new yacht ready for immediate delivery with under 500 operational hours."*

*Not available for sale to U.S. residents while in U.S. waters.*

KASIF | 41.86M / 137'04" |

MAIN DECK AFT EXTERIOR

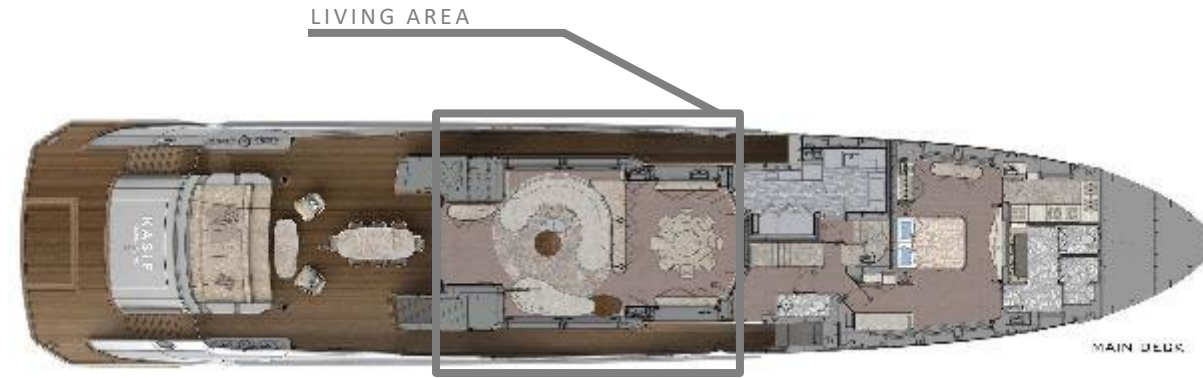


MAIN DECK



KASIF | 41.86M / 137'04" |

MAIN SALON & DINING AREA



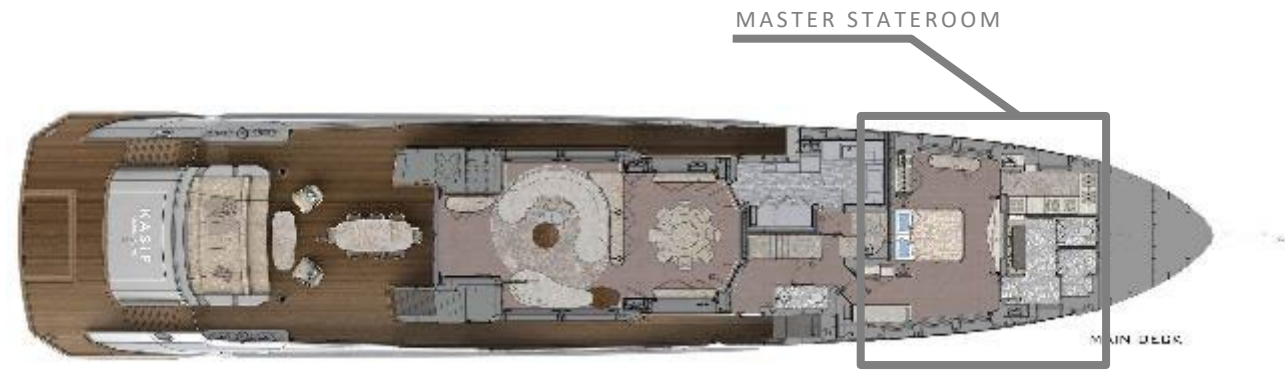
MAIN DECK





KASIF | 41.86M / 137'04" |

MASTER STATEROOM



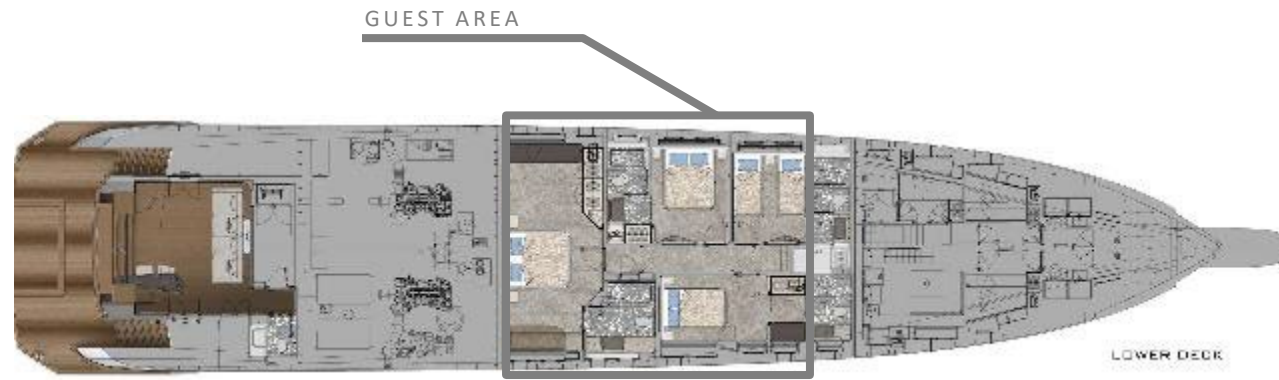
MAIN DECK











LOWER DECK













BRIDGE DECK INTERIOR



BRIDGE DECK

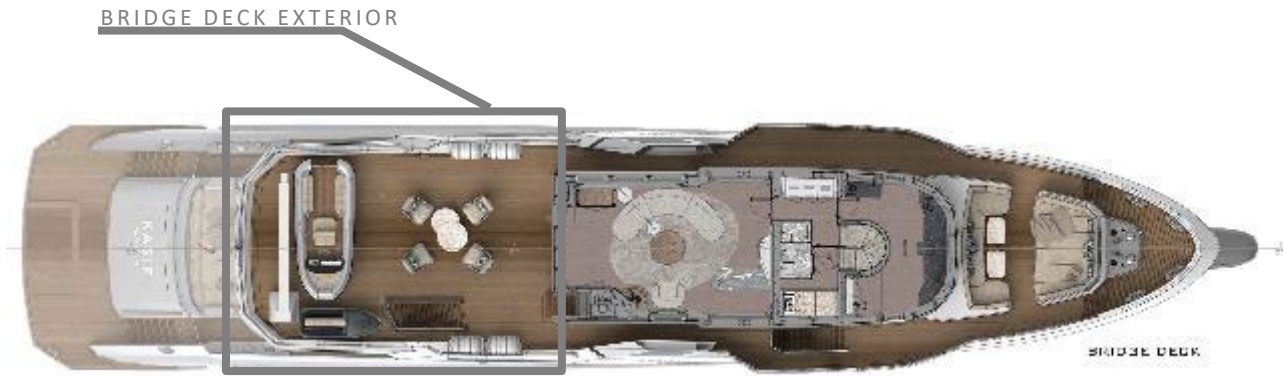












BRIDGE DECK





KASIF | 41.86M / 137'04" |

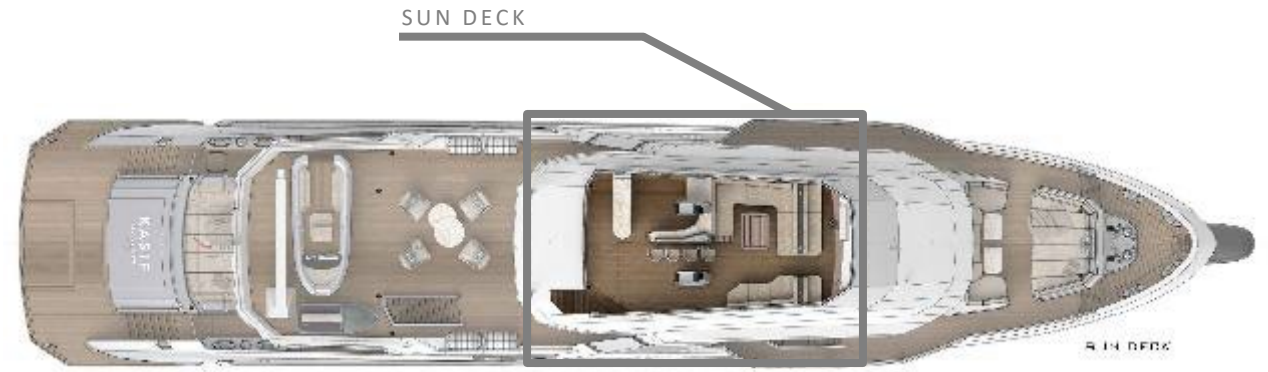
BRIDGE DECK EXTERIOR



KASIF | 41.86M / 137'04" |

BRIDGE DECK EXTERIOR





SUN DECK







BEACH CLUB



LOWER DECK

LOWER DECK



KASIF | 41.86M / 137'04" |

PORT SIDE



KASIF | 41.86M / 137'04" |

EXTERIOR



KASIF | 41.86M / 137'04" |

ANCHORED



KASIF | 41.86M / 137'04" |

AERIAL VIEW



KASIF | 41.86M / 137'04" |

STARBOARD SIDE









